

GOLD LINE[®] PARKING

Autocashier



The Gold Line[®] Parking Autocashier is your 24/7 Automatic Parking Attendant.

The Hamilton Gold Line[®] Parking Autocashier is a cost effective solution to your parking needs. This in-lane paystation will independently collect fees, return change and operate an entrance or exit gate 24 hours a day, seven days a week, eliminating the need for an attendant. Among its many new developments, the GL-ACW-P can now be programmed with up to 9 different parking rates for automatic changes on a daily, weekly or special event basis. This increase in flexibility gives you the opportunity to adjust fees more frequently. A receipt printer option is available for customers who need a record of their parking transaction. They can choose to collect a receipt with their cash or credit card transactions.

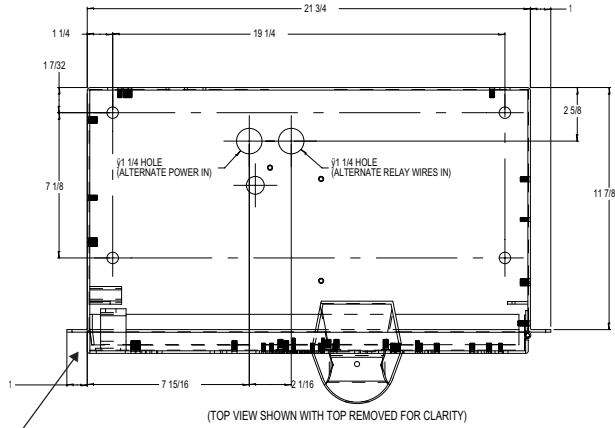
The Hamilton Gold Line[®] paystation is an ideal parking solution for hospitals, universities, municipalities, airports and private lots, in both parking garage and surface lot applications.

The Gold Line[®] ACW-P is the worry-free choice for reducing payroll costs without compromising reliability.

Shown with optional stainless steel mounting base and lighted hood.

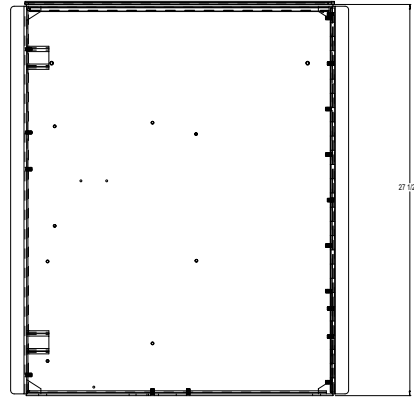
Hamilton Manufacturing Corporation

Cabinet



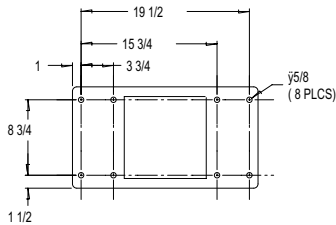
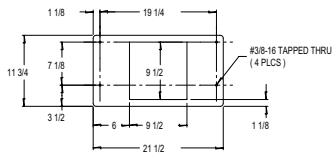
* Flange extends 1" from edge of cabinet.

NOTE: Specifications on drawing subject to change.

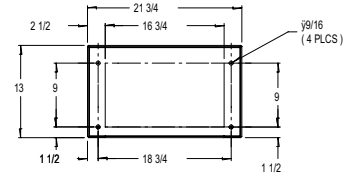
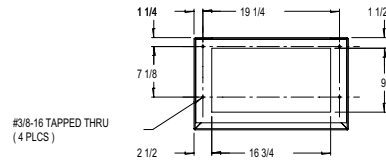


(FRONT VIEW SHOWN WITH DOOR REMOVED FOR CLARITY)

Pedestal Base



Stainless Steel Base



FEATURES

- XE Validator with \$1, \$5, \$10, \$20 bill and Tokenote® acceptance
- Instructional LED display
- Programmable clock/calendar
- Two coin acceptors
- Stainless steel hopper with \$800 quarter capacity
- Durable stainless steel cabinet construction
- Two heavy duty Medeco® plug locks
- Voice prompts walk customers through the transaction process

OPTIONS*

- Hamilton STA Validator with Tokenote® Acceptance
- CashCode® Validator for U.S. or foreign currency
- Credit card acceptance
- Receipt printer
- Lighted hood
- Interactive scrolling display
- Stainless steel mounting base (20" or 26")
- Pedestal base (20" or 26")
- Hand-held thermal printer
- Custom Voice prompts

Subject to change without notice.

For more information contact your local Hamilton Distributor.

SPECIFICATIONS

Cabinet	10 gauge stainless steel
Weight	approx. 200 lbs
Power	110 VAC 60 Hz
Door Voltage	24 VAC, DC

CABINET DIMENSIONS

27 1/2" H x 21 3/4" W x 11 7/8" D

* Additional validator options may be available, Contact Hamilton for more details.

Hamilton Manufacturing Corporation