

**SOUTHERN TIME
EQUIPMENT COMPANY
PRESENTS
FEDERAL APD
SCAN NET
SOFTWARE
TRAINING CLASS
JUNE 24 & 25, 2010**



Class will be held at our Wilson Training Center
Southern Time
2920 Horace Watson Road
Wilson, NC 27893

800-849-5654

www.southerntime.com



**Scan Net Training
Informational Areas**

System Device Management

Each device must be programmed to function properly in your system. There are also many ways of modifying the current programming to suite your changing needs.

System Utilities

The Scan Net System utilities can be used for archiving , purging, and splitting data. Also there are many permission tools to help you keep up with your ever-changing need for security.

Scan Net Maintenance

The Scan Net System Computer operates 24 hours a day seven days a week. This type of operation requires that the system be maintained periodically in order to facilitate continuous proper operation.

System Monitoring

Counts—System Activity—Device Activity—Event Control Log—Pay Station Status Monitor

System Access Control

Card Access Programming and Management

System Reports

The Scan Net System offers several different predefined reports along with the capability to customize others. Reports can be used for several different purposes including revenue tracking, employee scheduling and system trouble shooting. Statistical data can also be retrieved in report form, including entry/exit, duration, and revenue statistics.



System Commands

System Commands allow the operator to control different features and functions of the Scan Net System. They allow devices to be commanded in real-time in order to attain a higher level of functionality.

Event Control System

The Event Control System in Scan Net is very powerful. An Event is defined as a task with a group of instructions that you create. Once you have created an Event in the system you can determine when and how the event will be operated. An Event can be as simple as opening a gate at closing time to pulling, printing and saving all cashier reports from your complete system.

All Classes will be conducted at our Wilson NC Training Center



Southern Time Equipment Company is located in Wilson NC on Horace Watson Rd. Off Hwy. 301 S. near the Hwy. 264 Bypass.

If you are interested in attending this one day event please fill out the enrollment form included with this email.

Cost per Attendee for the two day class will be \$450.00

If you need help getting here please call us at 252-291-4318.

Accommodations information if needed

<http://www.wilson-nc.com/lodging.cfm>

Holiday Inn Express

252-246-1588

Tarboro Street / Hwy 42

Fairfield Inn & Suites

252-265-5660

4915 Hayes Place West

Hampton Inn & Suites

252-291-0330

606 Lamm Road



Software Training Classes

This Scan Net class has been designed for persons who are either currently operating a Scan Net System or who have just been introduced to the Scan Net System. The first day will cover daily operation processes, while the second day will cover some more advanced features and functionality.

The class has been tailored to cover all aspects of the system and will provide enough direction to operate and manage the Scan Net System.



The classes will be fast paced and will include most everything needed to operate and manage the Scan Net System. Some of the covered topics include System Passwords, System Monitoring, System reports, System Configuration, System Utilities, Scan Maintenance, Scan Net help and many more Scan Net related topics.

Class space is limited so please send in your enrollment form as soon as possible. Seats will be available on a first come, first served basis.



Training Class Day 1

The first day of software training will be taught with the intent on familiarizing the end users with the functionality of Scan. To be specific, it will be broken down into three sections.

Section #1 will focus on daily use. Some examples would be reports that are commonly relied on by end users for ac-



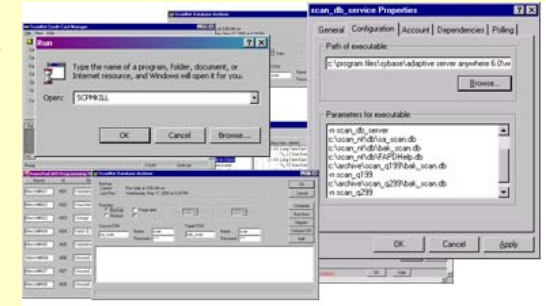
counting and auditing purposes, which user interfaces to monitor in order to understand current system status, remote gate raising commands, and manipulating the vehicle counts.

Section #2 will be predominantly about automating system functions, card access updates, and general programming modifications.

Section #3 will specialize in in-depth programming of devices, sending commands, and utilization of the ticket tracking system. We will conclude the day with a recap of covered topics followed by a question and answer segment.

Training Class Day 2

The second day of Scan training is oriented more for the Administrators of the system. Topics will include the proper way to shut scan down and bring it back



online, core service dependencies such as the Sybase service, how to properly force a shut down in the event of no other alternatives, the database archival process, key scan logs to include in the administering process, the back-up processes, and the scan user security configuration.

Administrators should come away from this class with a clear understanding of the necessary actions needed to safeguard the application's functionality and data

